

## **Schedule 1**

### **Item 1 Description of Agreement Area**

#### **A. External boundary description**

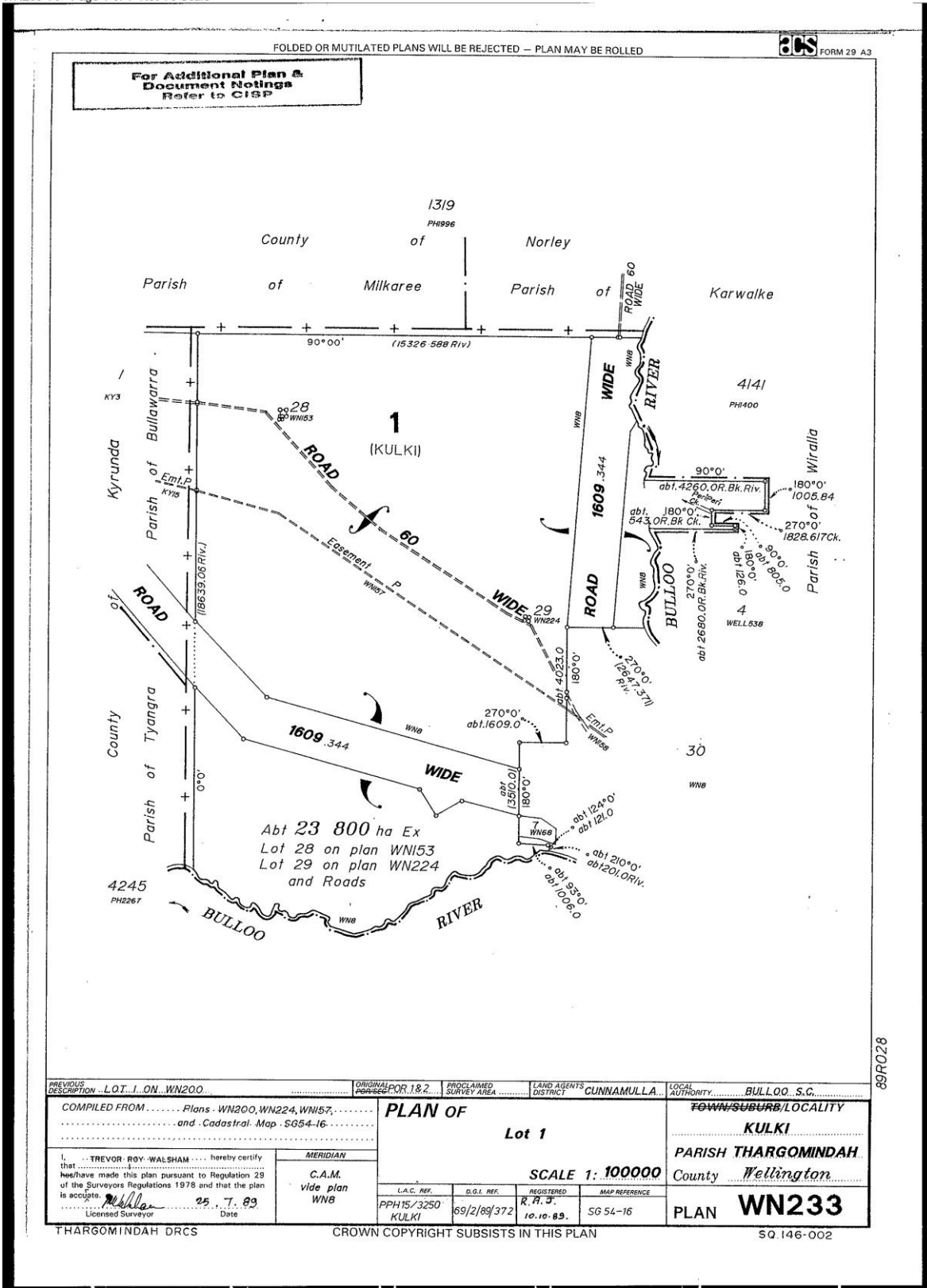
The agreement area covers all the land and waters within:

- Lot 1 on WN233 (Kulki Preferential Pastoral Holding)
- Lot 4245 on PH2267 (Lake Bullawarra Pastoral Holding)
- Lot 4 on WELL538
- Lot 2 on KY3

**B. Map**

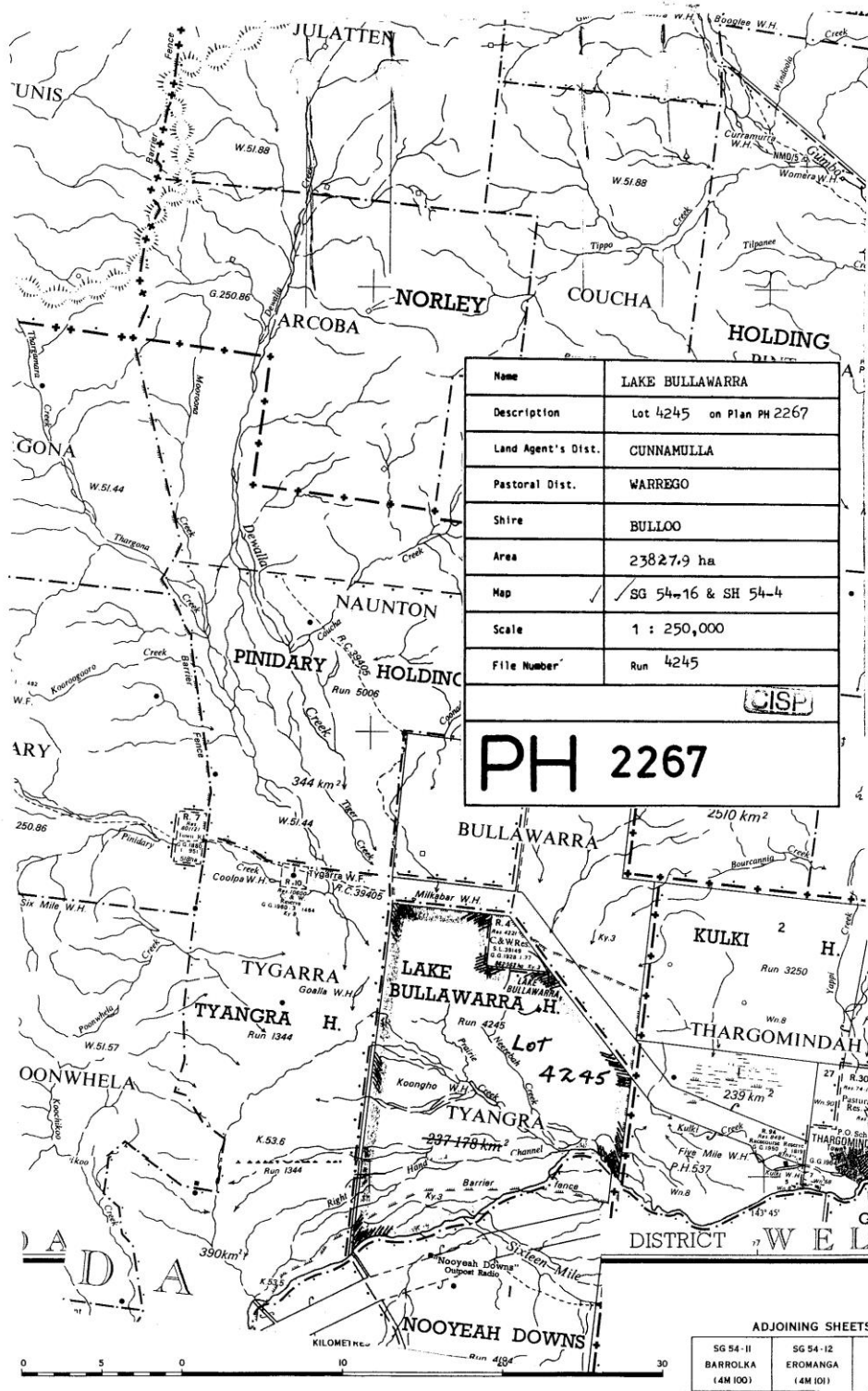
**Kulki Preferential Pastoral Holding**

WN233 V0 Page 1 of 1 Not To Scale



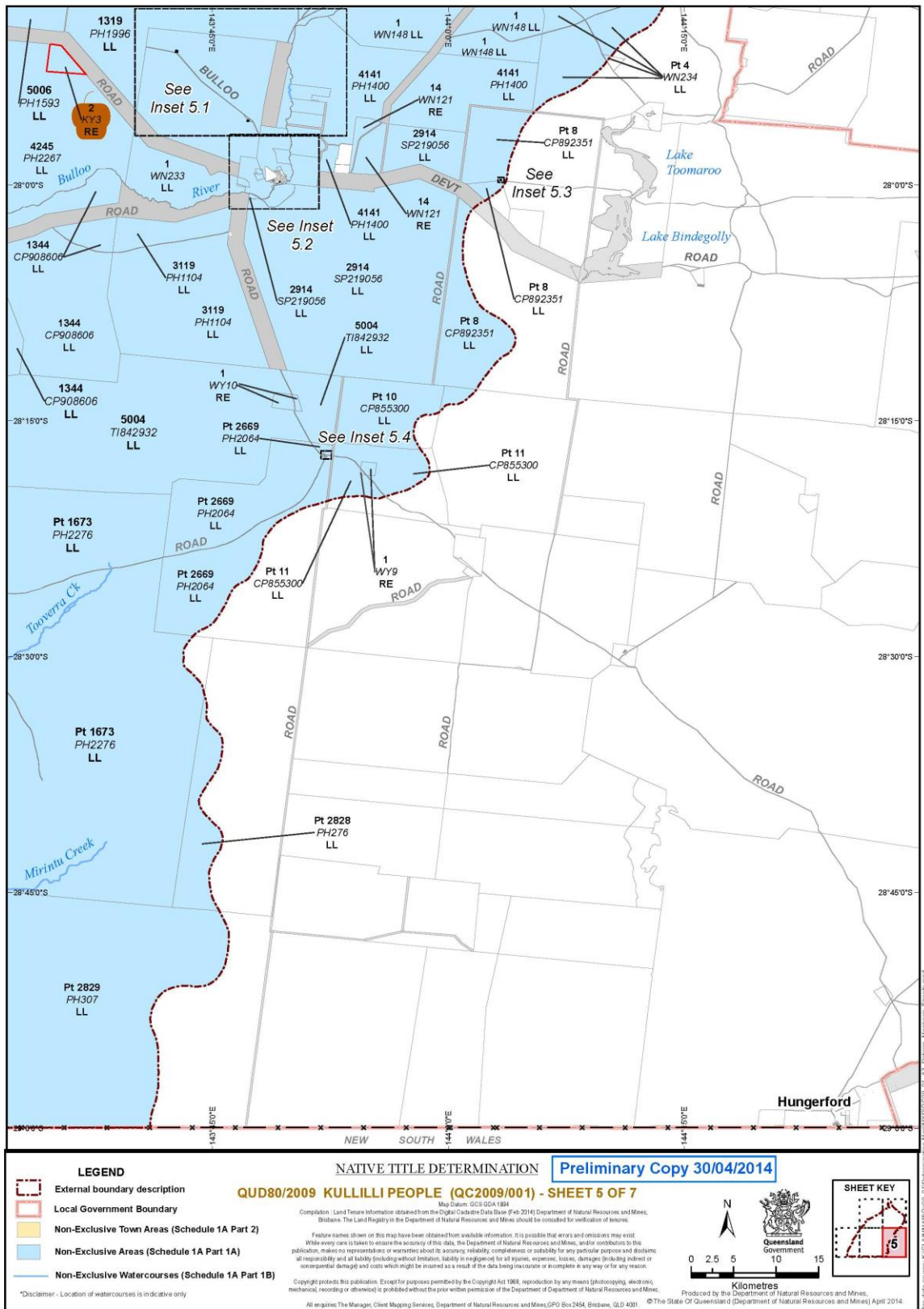
### Lake Bullawarra Pastoral Holding

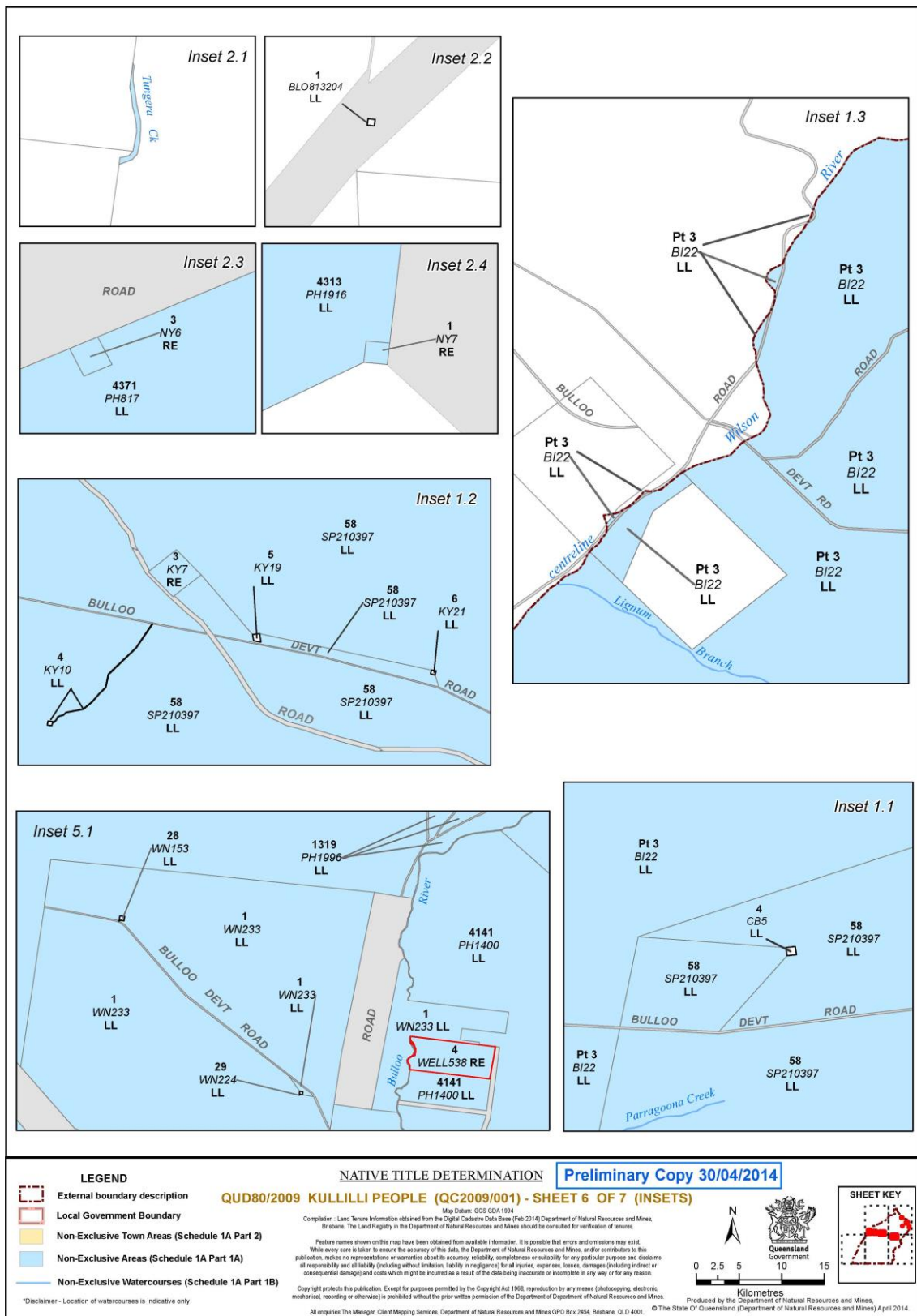
PH2267 V0 Page 1 of 1 Not To Scale



Copyright protects the plan/s being ordered by you. Unauthorised reproduction or amendments are not permitted.

### Term Lease 210115 & Special Lease 15/48119





**Item 2**                    **Description of Leases**

Preferential Pastoral Holding 15/3250 comprising Lot 1 on WN233

Preferential Pastoral Holding 15/4245 comprising Lot 4245 on PH2267

Term Lease 210115 comprising Lot 4 on WELL538

Special Lease 15/48119 comprising Lot 2 on KY3

**Item 3**                    **Description of Lessee**

ECT Holdings Pty Ltd ACN 103 819 629